

Editor In-Chief  
**Er. J.J.R. NARWARE**  
Director

Editor  
**Er. Mahesh Chandra (S.A.E.)**  
**Er. A.K. Upadhyay (A.E.)**

Editorial Associate  
**Er. Ranita Pawar (S.T.A.)**

## CONTENTS

SL. NO.	CONTENTS	PAGE NO.
<b>1.</b>	<b>Institute</b> Introduction Location of the Institute Climate Staff Strength	<b>4-6</b>
<b>2.</b>	<b>Training</b> Training objectives Training schedule Training facilities Achievement	<b>7-17</b>
<b>3.</b>	<b>Testing</b> Objectives of testing Type of test Standards Followed Testing Facilities Testing Charges How to avail testing facility	<b>18-25</b>
<b>4.</b>	<b>Farm Section</b>	<b>26</b>
<b>5.</b>	<b>Administration</b>	<b>27-29</b>
<b>6.</b>	<b>Appendix - I</b>	<b>30</b>
<b>7.</b>	<b>Annexure - I</b>	<b>31-32</b>
<b>8.</b>	<b>Annexure - II</b>	<b>33-35</b>

## FROM THE DIRECTOR DESK



The Institute is all set to provide a veritable platform to all working in different sectors as agriculture, farm mechanization, tractor industry and agriculture machinery etc. The main aim of the Institute is to develop all these sectors by training and testing activities. It will try to trained more number of farmers, unemployed people, learning students and company employees on a common platform which will work towards major breakthroughs in all these areas of growth.

Mechanization of agriculture is an essential input to the modern agriculture. It enhances productivity besides reducing human drudgery and cost of cultivation. Mechanization also helps in improving utilization efficiencies of other inputs, safety and comfort of the field farmers, improvement in the quality and the value addition of the produce.

The Central Farm Machinery Training & Testing Institute, Budni is a Premier Institute under Department of Agriculture & Cooperation & Farmer Welfare, Ministry Of Agriculture and farmer welfare GOI functioning since 1955 keeping pace with the changing needs of the mechanization, taking a different shape to compete with global changes by harmonizing with the global standard so that Indian tractor and other agricultural machinery have easy access not only to developing Asian & African countries but European and U.S. markets also. The Institute has been designated as one of the agencies for testing of tractors and allied agricultural Machines conforming to CMVR. It is participating member of the OECD for carrying out the official test in accordance with OECD standard test codes.

This Institute is ISO 9001: 2008 certified organization in ahead of maintaining the work quality and to reach the best results of our job with more than five decades of experience with the quality services in all the sphere of our activities.

We are dedicated for strengthening the agricultural mechanization through training and testing and work for the fulfillment of our national goal.

I am very happy to release this Annual Report, which gives comprehensive source of information about the activities of this Institute for the year 2015-16. I hope, this Report shall be useful to all those who are engaged in Farm Mechanization activities.

**J. J. R. NARWARE**  
Director

# INSTITUTE

## INTRODUCTION

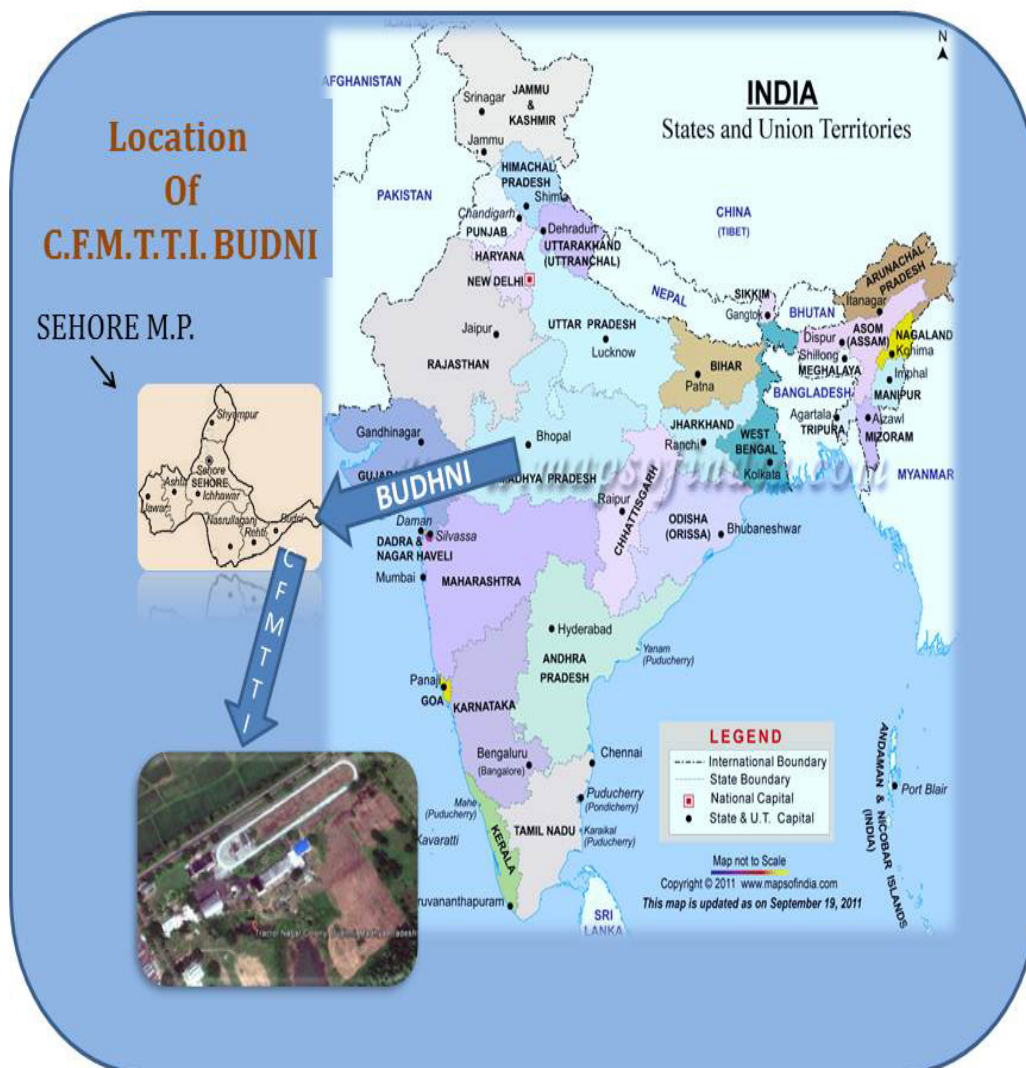
**Central Farm Machinery Training and Testing Institute, Budni** is a premier Institute under the Mechanization and Technology Division of Dept. of Agri., Cooperation & Farmers Welfare, Ministry of Agriculture, Govt. of India functioning since 1955. Keeping pace with the changing needs of mechanization, the Institute has updated and modernized its training and testing activities.

At present, the Institute conducts training on working principle, operation, adjustment, service, maintenance, repair, selection and management of Tractors and Farm Machinery for the progressive farmers, technician, engineers, in-service personnel's, defense personnel's, foreign nationals and farm women's. Institutes also conducts off campus training program on energy conservation & safety in farm machinery at village/block level in coordination with state Governments. It is official Institute for testing of tractors, power tillers, combine harvesters and other farm machineries, for the quality control on the basis of Indian and International Standards. It is participating member of the OECD for carrying out the official test on agricultural tractors in accordance with OECD standard test codes. The Institute has been designated as one of the agencies for testing of tractors and allied agricultural machines as to their conformity to the Central Motor Vehicle (Amendment) Rules.



## LOCATION

Geographically the Institute is situated on the foot hill of Vindyanchal ranges on the bank of Narmada River and located at 78° East longitudes and 23° North latitude at an elevation of 305 m from the mean sea level. It is 1.6 km away from Budni Railway Station. The Budni Railway Station is on the main Central line connecting Delhi with Mumbai and Chennai and is only 25 km from Itarsi Junction. Obedullaganj-Nagpur National Highway No. 69 passes through Budni Institute and is 65 km away from Bhopal.

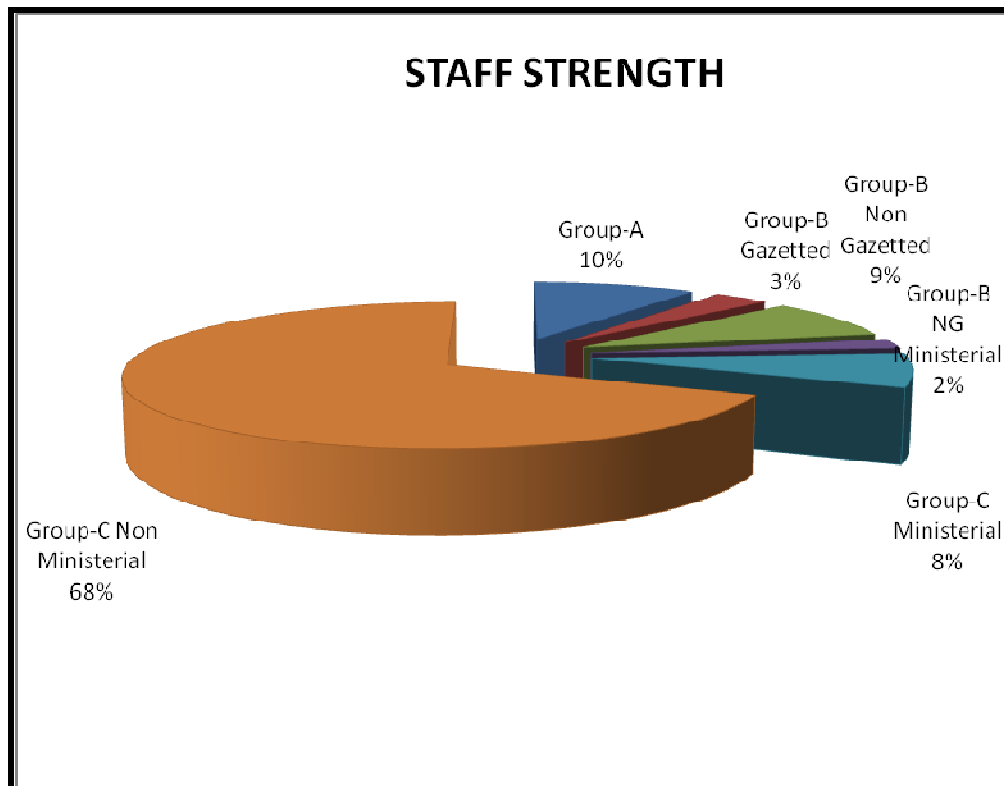


## CLIMATE

Ordinarily the climates are normal and rainy season starts from last week of June to middle of September. The average rainfall is 1200 mm. The winter season is pleasant but the latter half of the summer season experiences a pretty high temperature around 45 degrees centigrade.

## STAFF STRENGTH

The total staff strength of the institute is 137 comprising of 9 group "A" officers, 3 Group 'B' Gazetted officers, 8 Group 'B' Non-Gazetted officers, 2 group 'B' Non-Gazetted ministerial, 9 group 'C' ministerial, and 68 group 'C' non ministerial, out of which 98 post are filled and 39 vacant.



# TRAINING

The Institute is equipped with a very wide range of different makes, model and types of wheel and crawler tractors, tillage, harvesting, processing, land shaping, irrigation, plant protection and transporting equipments used in mechanized farming. Well-equipped workshop for repairs, servicing and reconditioning with cut sections. On the job practice on welding, carpentry and electrical repairs have been provided. The Institute has also well-equipped laboratories of different agricultural machinery and equipments as well as hand tools.

Institute imparting **“ON-The-JOB”** training on tractors, engines, their service and overhaul and for various systems namely Engine, power transmission, hydraulic, auto electrical, wheel equipment, irrigation pumps, plant protection equipments, electric motors, other agricultural machines and equipments.



## *OBJECTIVES OF TRAINING*

- ❖ To create awareness for judicious use of available farm machinery and power.
- ❖ To transfer the proven technology from research institutes to the actual users.
- ❖ To help farmers/technicians/engineering students etc. The selection operation, repair, maintenance management and other aspects of mechanization.
- ❖ To upgrade social and economic condition of the rural youth by generating the employment further.
- ❖ To encourage the energy conservation in agriculture through various training programs.
- ❖ To upgrade social and economic condition of the farm women's by creating awareness for women's friendly tools.

CFMTTI BUDNI

**TRAINING PROGRAMS**

The training program has been re-structured wef 01.04.2005. Details of the course, duration and course fee is given as under:-

Code	Name of the Course and duration	Duration	Fees
<b>USER'S LEVEL COURSES</b>			
U1	Selection, Operation, Safety and Maintenance of Improved Agricultural Machinery	6 weeks	Free
U2	Operation, maintenance and Management of power tiller	2 weeks	
U3	Appropriate Mechanization Technology for Energy Management in Agriculture	4 weeks	
U4	Training Program on Agro Processing & value addition Equipments	2 weeks	
U5	Gender friendly Equipments for Women farmers	3 days	
U6	Utilization of Non-conventional Energy Sources in Agriculture.	1 week	
U7	Water Management Through Micro Irrigation & Water saving devices.	1 week	
U8	Selection, Operation, and Maintenance of Plant Protection Equipments	1 week	
U9	Selection, Operation, and Maintenance of improved Harvesting & Threshing Equipment	2 week	
U10	Selection, Operation, and Maintenance of Hand Pump	1 week	
U11	<b>Crop Specific Machines</b>		
a)	Package of Agricultural machinery for Paddy cultivation.	1 week	
b)	Package of Agricultural machinery for Maize cultivation.	1 week	
c)	Package of Agricultural machinery for Vegetable cultivation.	1 week	
d)	Package of Agricultural machinery for Sugarcane cultivation.	1 week	
e)	Package of Agricultural machinery for Horticulture & Medicinal crops	1 week	
f)	Package of Agricultural machinery for oil seed and pulses	1 week	
U12	I.T. application in Farm Machinery	1 week	
<b>TECHNICIAN'S LEVEL COURSES</b>			
T1	Repair and overhauling of Stationery engines and tractors	6 weeks	300/-
T2	Repair & overhauling of power tillers	2 weeks	100/-
T3	Repair, workshop management for establishment of improved agricultural machinery workshop	4 weeks	200/-
T4	Study & Repair of Hydraulic system in Agril Machines.	4 weeks	200/-
T5	Repair and maintenance of Auto Electrical equipments and Battery re-conditioning	3 weeks	150/-
T6	Repair, maintenance & rewinding of Electrical motors, and submersible pumps for agril. use	3 weeks	150/-
T7	Operation & maintenance of Land shaping and Development machinery	4 weeks	500/-
T8	Repair, overhauling & installation of Diesel pumping sets	2 weeks	100/-
T9	Maintenance, repair & installation of combine Harvesters and Straw Reaper.	3 weeks	150/-
<b>MANAGEMENT LEVEL COURSES</b>			
M1	Testing and Evaluation of Farm Machinery	1 week	1000/-
M2	Agriculture Machinery Management	1 week	1000/-
<b>ACADEMIC LEVEL TRAINING PROGRAM</b>			

**CFMTTI BUDNI**

<b>A1</b>	Training program on Farm Power & Machinery for Degree/Diploma Engg. Students.	<b>4 weeks</b>	<b>200/-</b>
<b>A2</b>	Practical Training program on Farm Power and Machinery for ITI & 10 +2 vocational students.	<b>4 weeks</b>	<b>200/-</b>
<b>AWARENESS COURSES THROUGH MULTIMEDIA SYSTEM</b>			
<b>AW1</b>	Centrally sponsored schemes for subsidy on Agril. Machinery, Business and Agro clinics	<b>1 to 2 days</b>	<b>Free</b>
<b>AW2</b>	Straw Management in Agriculture.	<b>1 day</b>	
<b>AW3</b>	Central Motor Vehicle Rules for Tractors, Dangerous Machines Regulation Act in Agri. Machinery, etc.	<b>1 day</b>	
<b>AW4</b>	Safety in Agricultural Machinery	<b>1 day</b>	
<b>TECHNOLOGY TRANSFER CAMPS - OFF CAMPUS</b>			
<b>TT1</b>	Energy conservation & safety in farm machinery	<b>1 to 2 days</b>	<b>Free</b>
<b>TT2</b>	Familiarization and demonstration of improved/modern agril. Machines.	<b>1 to 2 days</b>	
<b>SJGSY</b>	Training Program For Rural Youth Under Swarnjayanti Gram Swarojgar Yojana	<b>8 weeks</b>	<b>As per the norms</b>
<b>NB</b>	Need Based Training Program on Mechanization	<b>As per requirement</b>	<b>1750/- per course</b>
<b>FN</b>	Training program for Foreign National as per requirements under Bilateral program.	<b>10 to 18 weeks</b>	<b>As per gov. policy</b>
<b>DF</b>	Special Training program on Utilization of Agril. Machinery for Defence personnel sponsored by Director General Re-settlement. (U-2 + T-1)	<b>12 weeks</b>	<b>2000/- per trainee/ course</b>
<b>APP</b>	Apprenticeship Training	<b>1 year 2 year</b>	
<b>*Eligible private candidates for User Level Courses (U1-U12) course are paid a stipend of ` 2000/- per Month</b>			



## FACILITIES

### 1. **Equipment and Workshop Facilities**

The Institute is equipped with a very wide range of different makes, model and types of wheel tractors, tillage, harvesting, processing, land shaping, irrigation plant protection and transporting equipments used in mechanized farming. For repairs, servicing and reconditioning, a well-equipped workshop with sections for handling jobs on machining, fitting, welding, carpentry, smith and electrical repairs have been provided. The Institute has also well-equipped labs for plant protection, irrigation pumps and hydraulics systems for imparting training on use, repairs and maintenance of machinery.

### 2. **Audio-Visual Section**

To supplement “on the job training” a sizeable collection of cut-away models of tractors, engines, pumps, electric motors and a number of display charts, boards-models are available. The audio-visual section possesses a good number of 16mm films and video cassettes & CDs on technical aspects.

### 3. **Residential and Hostel Facilities**

The Institute has reasonably furnished hostel where trainees are provided free accommodation. However, they are required to pay for their boarding. A committee of the trainees manages the mess. The indoor and outdoor sports facilities for the use of trainees are also available there.

### 4. **Library**

The Institute has well equipped technical library having more than 30000 books, test codes, test reports including macro and micro documents. The library subscribes to quite a good number of engineering journals published in India and abroad. To improve the training and testing education, the library is going to be digitized and classified. The work of digitalization is on progress.

## CFMTTI BUDNI

The details of the books available in library are as under:

Sl. No.	PARTICULAR	COLLECTION
1	Technical Books	16429
2	Technical journals	3000
3	Test Reports and other testing documents	14477
4	OECD Test Reports	1900
5	Institute publications	20
6	Annual Intake of book	94
7	Lending daily	48
8	Users attendance daily	70
9	Reference queries attended	90
10	C D ROMS	37

### 5. Rest House

A rest house with modest facilities is available at the Institute for accommodating visitors.

### 6. Dispensary

A dispensary equipped with medicines and instruments of day to day requirement is maintained for the benefit of staff and trainees. The dispensary is staffed with a regular compounder and a part time medical practitioner.

### 7. Auditorium

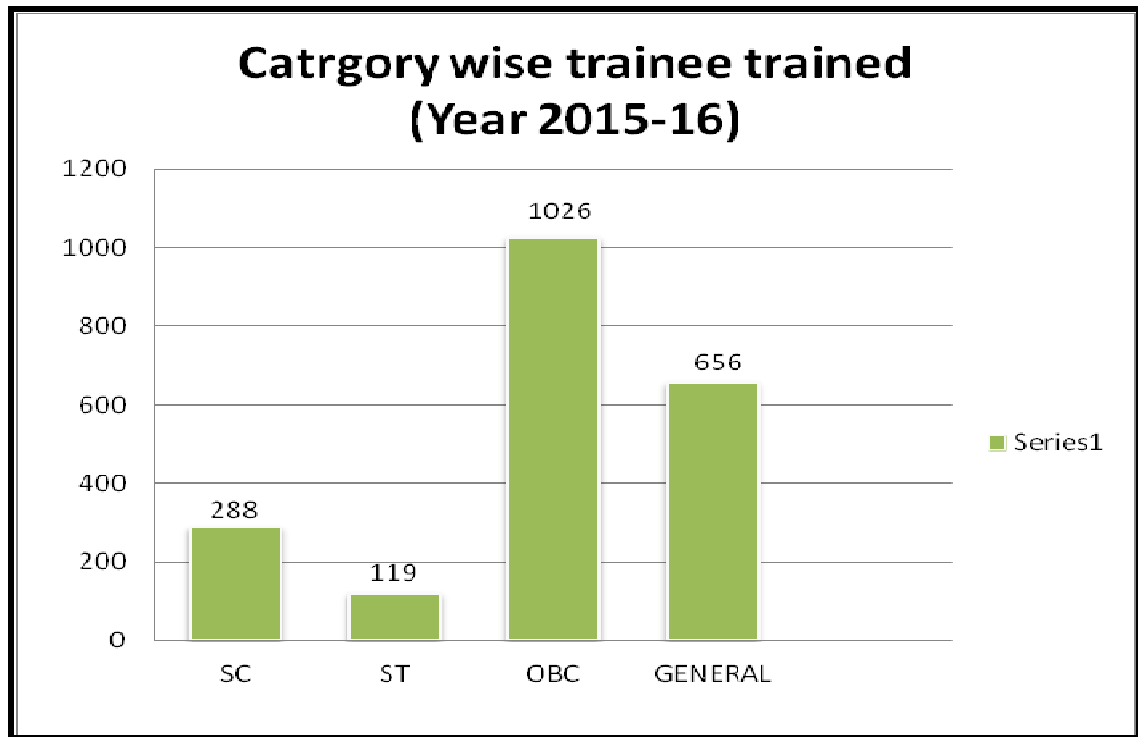
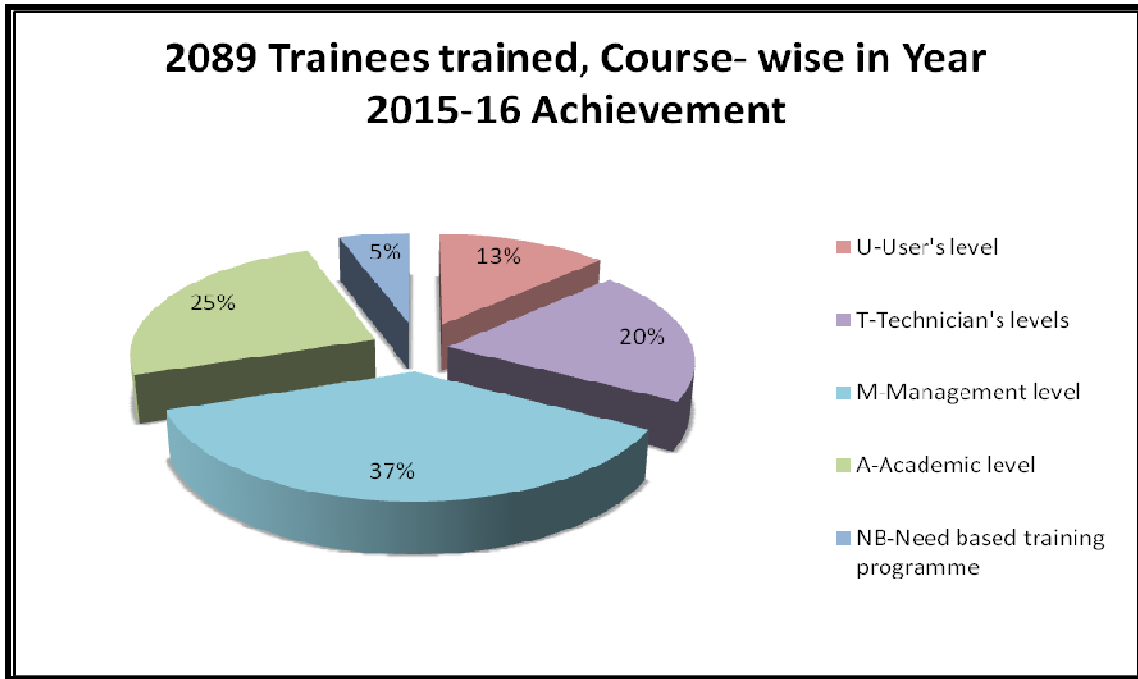
The auditorium with modern facilities like digital dolby sound system, fully air conditioned and having 200 setting capacity.

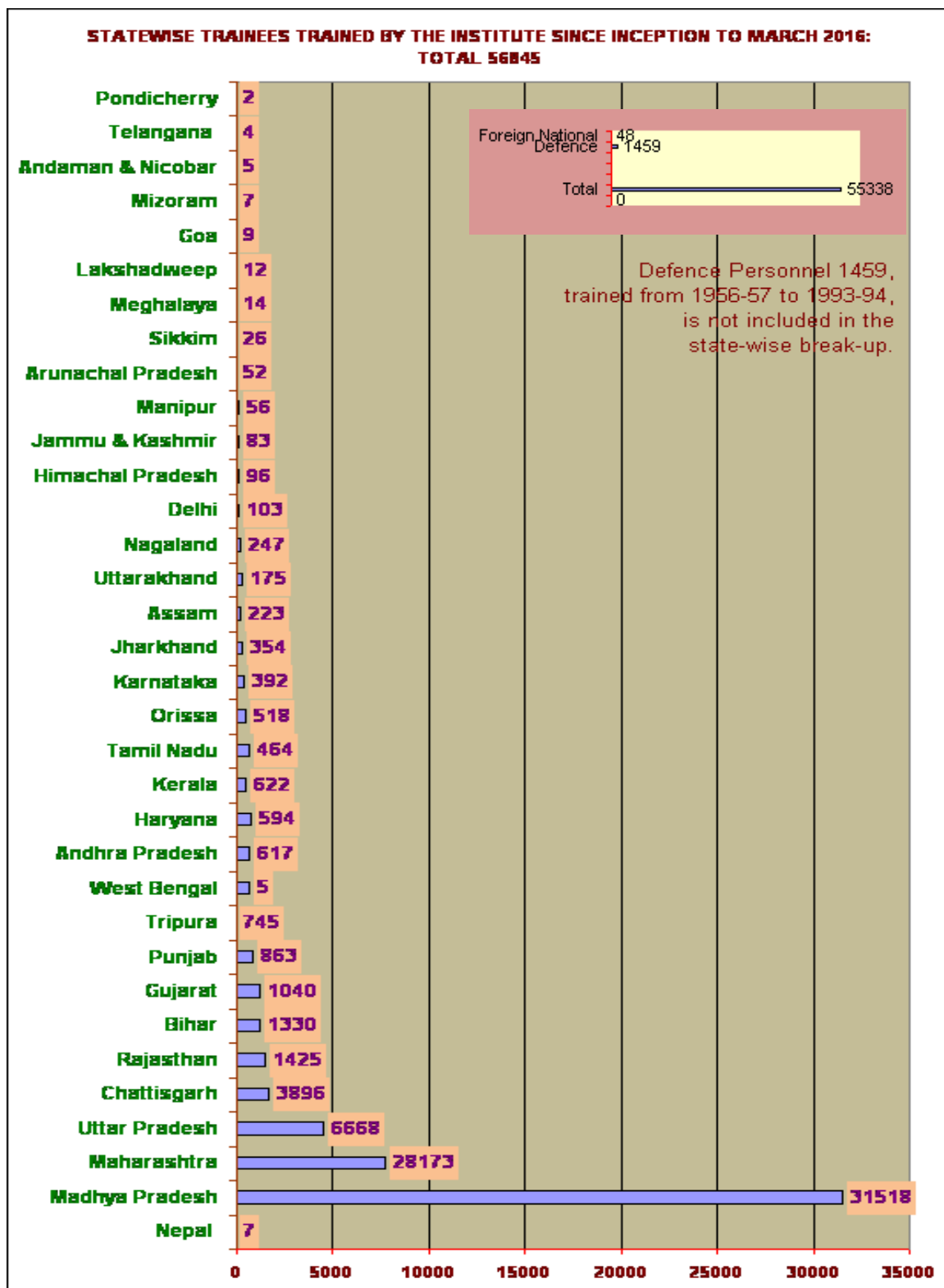
# ACHIEVEMENT

## TRAINEES TRAINED

Total 2089 trainees were trained against the target of 1900 during the year 2015-16. The progressive total of trainees since inception of the institute is “56845”, out of which 48 are foreign nationals. The details of course wise and state wise trainees trained in the year 2015-16 are given in table.

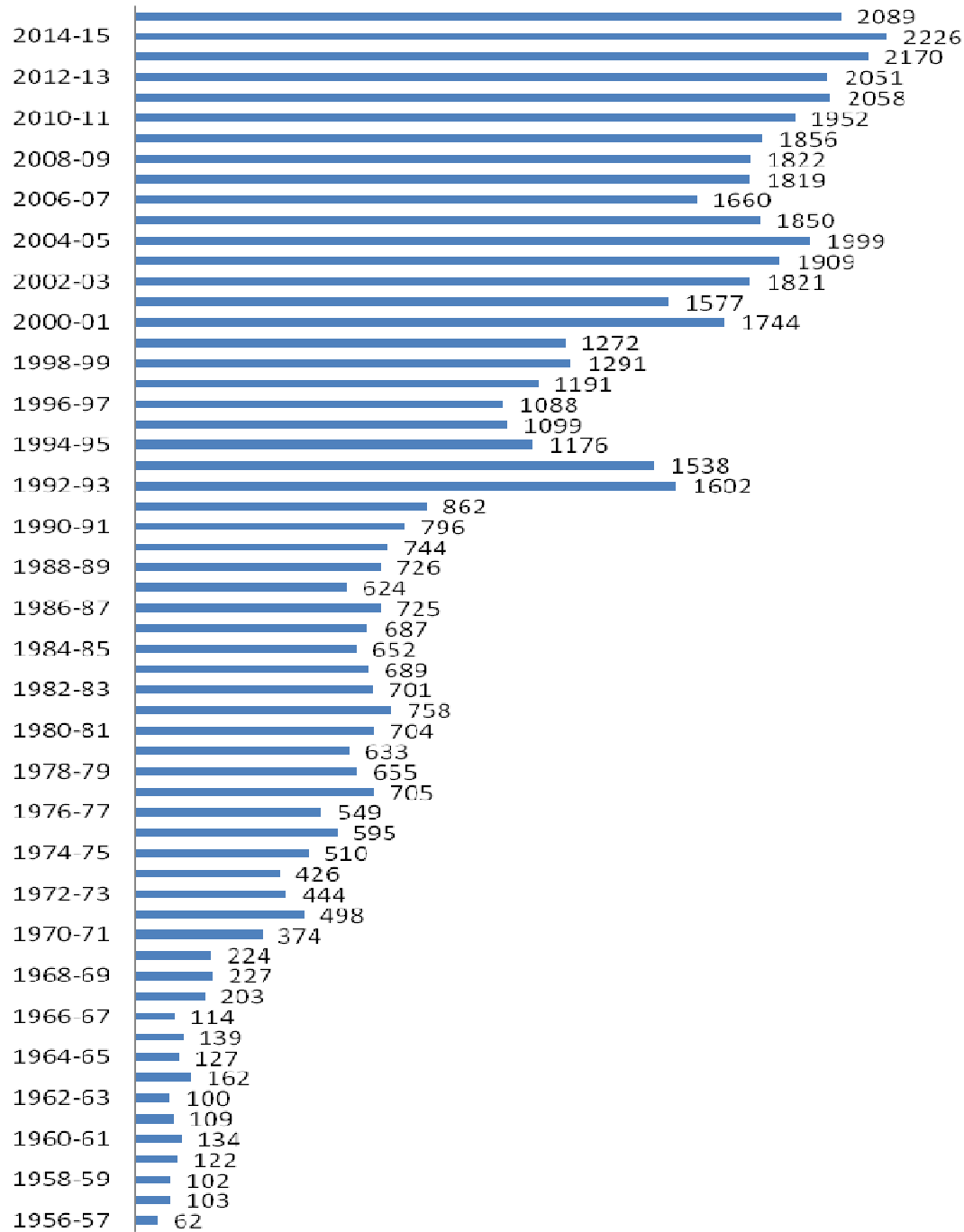
Sl. No.	Name of Courses	Input achievement in last Six year					
		Achievement (2010-11)	Achievement (2011-12)	Achievement (2012-13)	Achievement (2013-14)	Achievement (2014-15)	Achievement (2015-16)
1.	U-User's level	345	320	212	143	291	271
2.	T-Technician's level	622	568	391	458	455	418
3.	A-Academic level	785	668	724	647	643	520
4.	AW-Awareness through multimedia system	00	00	00	00	00	00
5.	NB-Need based training program	23	37	248	574	157	113
6.	DF	00	00	00	00	00	00
7.	TT-Technology transfer camps – off campus	00	00	00	00	00	00
8.	M-Management level	168	465	476	348	680	767
9.	Target	1900	1900	1900	1900	1900	1900
10.	<b>Total</b>	<b>1943</b>	<b>2058</b>	<b>2051</b>	<b>2170</b>	<b>2226</b>	<b>2089</b>





## YEAR WISE TRAINEES TRAINED (TOTAL-56845) Trainees Trained

■ YEAR WISE TRAINEES TRAINED (TOTAL-56845) Trainees Trained



## CFMTTI BUDNI

### FAIRS AND EXHIBITIONS

Institute participated in the following National/state level Exhibitions and displays appropriate agricultural machineries, cut models etc. and given the demonstration of agricultural machineries to delegates.

Sl. No.	Name and Place of Exhibitions	Duration	Participants
1.	Agro Bihar 2016	17-02-2016 to 21-02-2016	5000



### Demonstration of the Machinery & Equipment at Villages, 2015-16 (Under SAGY Scheme)

Sl. No.	Date	Equipments demonstrated	Villages/Block
1	01.04.2015	Demonstration of Three Bottom Disk Plough & Its Application	Sangakheda Kala
2	23.04.2015	Demonstration of Three Bottom Disk Plough & Its Application	Chitlaya Hoshangabad
3	24.04.2015	Demonstration of Three Bottom Disk Plough & Its Application	Chitlaya Hoshangabad
4	09.05.2015	Demonstration of Three Bottom Disk Plough & Its Application	Kusumkheda, Sehore
5	10.05.2015	Demonstration of Three Bottom Disk Plough & Its Application	Kusumkheda, Sehore
6	06.06.2015	Demonstration of Three Bottom Disk Plough & Its Application	Panjra Kala, Hoshangabad
7	07.06.2015	Demonstration of Three Bottom Disk Plough & Its Application	Panjra Kala, Hoshangabad
8	02.07.2015	cultivator	Hoshangabad
9	08.07.2015	Rotavator	Betul
10	10.07.2015	Rotavator	Vidisha

## CFMTTI BUDNI

11	15.07.2015	Rotavator	Bhopal
12	05.08.2015	Rotavator	Chindwara
13	18.08.2015	cultivator	Jabalpur
14	20.08.2015	Rotavator	khandwa
15	26.08.2015	Rotavator	Indore
16	03.09.2015	Rotavator	Balaghat
17	08.09.2015	Rotavator	Rajgarh
18	16.09.2015	Rotavator	Ratlam
19	22.09.2015	Rotavator	Rewa
20	06.10.2015	Cultivator, Groundnut Decodicator	Shahdol
21	07.10.2015	Rotavator	Khargon
22	08.10.2015	Rotavator	Dewas
23	14.10.2015	Rotavator	Damoh
24	27.10.2015	Rotavator, Seed Drill, Groundnut Decodicator	Wardha
25	03.11.2015	Rotavator	Dhule
26	20.11.2015	Rotavator	Satara
27	25.11.2015	Rotavator	Nasik
28	28.11.2015	Rotavator	Amrawati
29	06.12.2015	cultivator	Mavel
30	09.12.2015	Rotavator	Chandrapur
31	17.12.2015	Rotavator, Groundnut Decodicator	Meerur
32	19.12.2015	Rotavator, Groundnut Decodicator	Parbhani
33	01.01.2016	Rotavator	Rajkot, Gujarat
34	03.01.2016	Rotavator	Amreli, Gujarat
35	12.01.2016	Rotavator	Samstipur, Bihar
36	13.01.2016	Rotavator	Samstipur, Bihar
37	19.02.2016	cultivator, power tiller	Bangurda, Jamshedpur
38	20.02.2016	cultivator	Hahap, Ranchi
39	22.02.2016	cultivator	Bishunpur, Lohardaga
40	11.03.2016	Rotavator, power tiller	Baroda, Sagar
41	12.03.2016	Rotavator, power tiller	Aber, satna
42	30.03.2016	Cultivator	Paldeew, Satna
43	30.03.2016	Reversible plough	Phandakalan, Huzur
44	31.03.2016	Reversible plough	Jahanpur, Budni



## TESTING ACTIVITY

The rapid demand of farm machines and the liberalized policy has prompted many manufacturers to undertake production of tractor and farm machines. With the increased investment on Farm Machinery, it is necessary to have some means of assessing the performance characteristics of these machines. Thus, there is a need to have an independent agency for evaluating the performance of the agricultural machines. This Institute is an important link between the manufacturers and the users of agricultural machines as well as other agencies responsible for the introduction and popularization of the same.



### *Objectives of the testing*

- To test tractors, implements, engines, pumps and other agricultural machines manufactured within the country or imported with a view to assessing their functional suitability and performance characteristics under different agro-climatic conditions so that the published test results would.
- Serve as a basis to decide the type of machine best suited for Indian conditions, which could be encouraged for import, production and popularization.
- Help the farmers and other prospective purchasers in determining the comparative performance of machines available in the market.
- Form basis for standard specifications to be used by the manufacturers and distributors;
- Help financial institutions in recommending financial assistance to the manufacturers as well as the farmers.

- To carry out trials on machines and implements which have proved to be successful in other regions of the world with a view to examine the possibility of their introduction in the country.
- To maintain check over the quality of agricultural tractors and other important agricultural machines through “Batch Testing” program and also assist the manufacturers in the product improvement and facilitate updating the specifications of these machines.
- To promote export of agricultural machines, especially tractors, through testing in accordance with International Standards/OECD Standards.
- To assist the Bureau of Indian Standards in the formulation of various standards on agricultural implements and machines.
- To test tractors and allied agricultural machines as to their conformity to the Central Motor Vehicle (Amendment) Rules, 1989, as amended from time to time and issuance of the certificates to that effect.
- To carry out the Emission test on diesel Engines and issuance of the certificates to that effect.

## Type of Tests

Two categories of tests i.e. **commercial** and **confidential** are carried out at the Institute:

### ■ **Commercial tests**

It is meant for establishing performance characteristics of machines that are in or ready for commercial production. The following types of tests are included in this category.

**Initial commercial test** for indigenous or imported machines ready for commercial production.

**Variation testing:** The variant model may be arrived from a base model by the addition / deletion / supplementation of the features as per IS: 12207

**Supplementary test:** Supplementary test of the tractors are also conducted.

**Batch commercial Test** for machines, which have already undergone Initial Commercial Test and/or are being manufactured commercially in the country. The objective of Batch Testing Program is to ensure continuous up gradation in the quality of the tractors that are being manufactured in the country. These tests

are conducted at a regular interval of three years. This program has helped the manufacturers immensely in providing quality equipment to the farmers.

■ **CONFIDENTIAL TESTS**

Test is carried out for providing information to the manufacturers on the performance of their machines and any other data that may be required by them.

- **Tests in accordance with Organization for Economic Co-operation and Development (OECD) Standard Test Code:** This test helps tractor manufacturer in obtaining the test report on tractor exclusively for export purposes.



**STANDARDS FOLLOWED**

**A. BIS codes:**

The testing of tractors, power tillers, combine harvesters and allied agricultural machines test codes/procedures brought out by BIS are followed for Indian Models.

**B. OECD (Organization For Economic Co Operation And Development) Standard Test Code**

India is a participating member of the OECD for carrying out the official test on agricultural tractors in accordance with OECD standard test codes. These tests are conducted by CFMT&TI, Budni in India. This will give a fillip to the entry of the Indian tractors into the International market by way of exporting of the tractors tested in accordance with OECD Standard test codes.

**C. Central Motor Vehicle Rules 1989**

The Institute has been designated as one of the agencies for testing of tractors and allied agricultural machines as to their conformity to the Central Motor Vehicle Rules, 1989, as amended from time to time and issuance of the certificates to that effect.

**D. Formulation of Indian Standards**

Bureau of Indian Standards is the nodal organization for formulating and publishing the Indian Standards on agricultural machines and their components. This Institute actively participates as Member in the various Sectional Committees constituted for the formulation of the Indian Standards on agricultural tractors and other farm equipment including engines and agricultural tires.

### **E. Formulation of AIS (Automotive Industry Standards)**

This institute participates in formulation of Standards through the committee/ subcommittee formed by the Ministry of Road Transport & Highways, Govt. of India.

### **F. Formulation of International Standards**

This institute is a permanent member of International Organization for Standardization. The institute is an active member in Technical Committee ISO/TC22/TC23.

## **Facilities for testing at the institute**

The testing wing of this Institute is fully equipped with sophisticated and modern scientific equipments/instruments for conducting various tests on tractor, power tiller, combine harvesters and agricultural machines.

To reduce the testing time the ministry has initiated the Creation of parallel test line.

The following works are in progress.

- Construction of standard test track of 1000 meter length.
- Construction of new test laboratory.
- Procurement of various test equipments.

## **MACHINE TESTED**

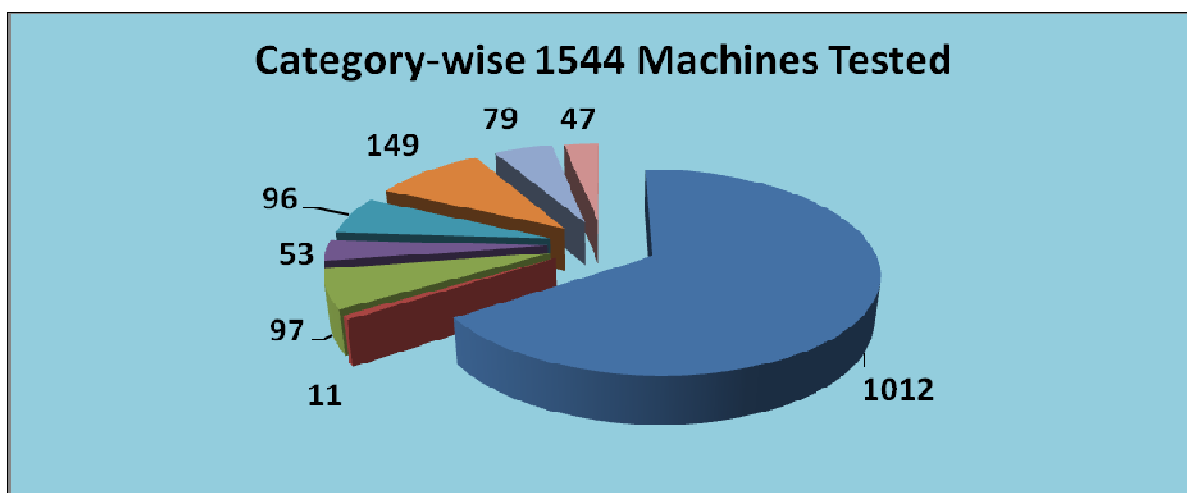
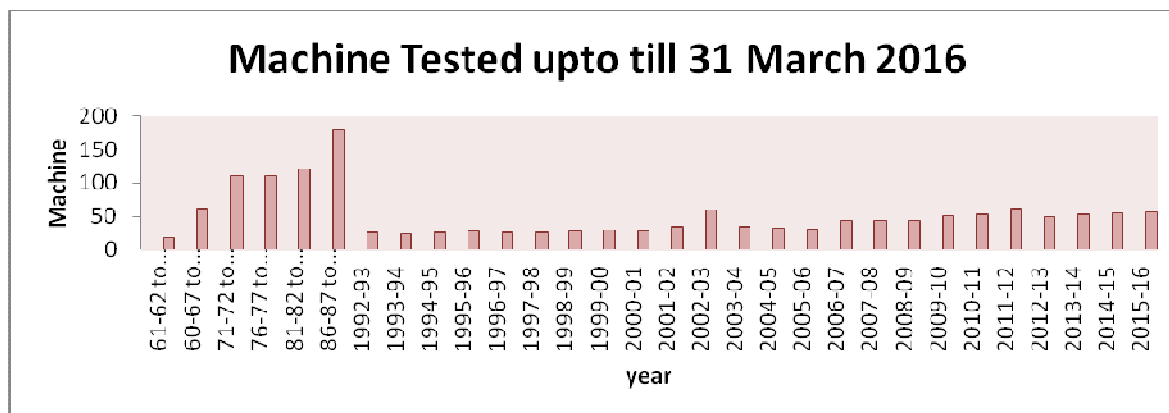
- Total **56** machines were tested against the target of **38** machines during the year 2015-16
- This includes the 03 Nos. tractors tested in accordance with O.E.C.D. test code procedure.

## **Central Motor Vehicle rules (CMVR) compliance certificate**

Central Motor Vehicle Rules compliance certificate issued to 124 numbers of tractors/combine harvesters/ power tillers/construction equipment vehicle during 2015-16.

## **Emission testing:**

The mass emission test certificates were not issued during the financial year.



### Input achievement in last Sixth year

Year	Target	Number of machine tested				Total	Remark
		Tractor	Power tillers	Combine Harvesters	Compon ents		
2010-11	38	52	00	00	01	53	39.8 % higher achievement
2011-12	38	61	00	01	00	62	63.2% higher achievement
2012-13	38	47	00	03	00	50	31.5% Higher Achievement
2013-14	38	48	01	01	02	52	36.8% Higher Achievement
2014-15	38	52	01	02	00	55	44.7% Higher Achievement
2015-16	38	51	00	00	05	56	47.36% Higher Achievement

## TESTING CHARGES

The prevailing Testing charges/fee fixed vides Ministry of Agriculture, Deptt. of Agriculture & Cooperation, New Delhi vide OM No.10-6/98-M& T (I&P) in respect of Tractors Power Tillers & Combine Harvesters are as under:-

S. No.	Name of the Machine	Revised testing fee (Rs.)	ST+CESS@ 14.5% as on date	Total amount (Rs.)	
1.	<b>Tractors</b>				
	a	Initial Commercial Test	6,18,192/-	89,638/-	7,07,830/-
		40 % of ICT test fee	2,47,277/-	35,855/-	2,83,132/-
		75 % of ICT test fee	4,63,644/-	67,229/-	5,30,872/-
		90 % of ICT test fee	5,56,373/-	80,674/-	6,37,047/-
	b	Batch Test	6,18,192/-	89,638/-	7,07,830/-
	c	OECD Test	3,67,416/- + Plus the fee charged by the OECD for approval of each test report	53,275/-	4,20,691/-
2.	<b>Power Tiller</b>				
	a	Initial Commercial Test	3,03,264/-	43,973/-	3,47,237/-
	b	Batch Test	3,03,264/-	43,973/-	3,47,237/-
3.	<b>Combine Harvester</b>				
	a	Self-propelled	2,86,200/-	41,499/-	3,27,699/- The fee is without engine
	b	Tractor powered	2,86,200/-	41,499/-	3,27,699/-
4.	<b>Testing of engines for mass emission of exhaust gasses under CMVR</b>				
	(a)	Engines of tractors, power tiller, combine harvester, and other self-propelled machines	1,28,304/-	18,604/-	1,46,908/-
5.	<b>CMVR Certification: Revised Charges</b>				
		Tractor	1,16,640/-	16,913/-	1,33,553/-
		Power tiller	93,312/-	13,530/-	1,06,842/-
		Combine harvester	93,312/-	13,530/-	1,06,842/-
		Tractor Trailer	34,992/-	5,074/-	40,066/-
		Amendment / Extension / Corrigendum of existing CMVR certificates (per case)	58,320/-	8,456/-	66,776/-

**Note :-**

Sl. No.	Description
1.	The revised fee will be effective from the date 01.04.2015 to 31.03.2016 one year and enhanced by 8 percent over the test fee prevailing in the previous year.
2.	The machines which are under test on or after the date of applicability of the order, the fee will be charged at the revised/new rates.
3.	<p>In case, where the manufactures get the machine tested partly i.e. test of few parameters rather than going for full test, the test fee will be charged at the following rates:</p> <p>(a) For testing of one parameter, the testing fee will be at the rate of 40% of the full test fee.</p> <p>(b) For testing of more than one parameter and up to 50% of total test parameters, the test fee will be at the rate of 75% of the full test fee. [As per Letter No. 10-6/98- M&amp;T (I&amp;P) dated 12<sup>th</sup> May 2014, if the parameters are more than 50% of the total test parameters, full test fee is to be charged.</p> <p>(c) For full laboratory test (where laboratory and field tests are prescribed), test fee will be at 90% of the full test fee. In same way it will be applicable for field test as well.</p>
4.	The test fee for confidential test would be 10% higher than the test fee applicable for Initial Commercial test.
5.	Additional test fee to the tune of 50% of the test fee applicable for Initial Commercial Test will be chargeable for conversion of nature of test from Confidential to Commercial within the provisions contained in the Test Regulation. The bank draft of such fee shall be deposited by the application at the time of application with the Director of the Institute. However, the same shall be refunded if the conversion is not approved.
6	The service tax is applicable @ 14.5% w.e.f. 15 <sup>th</sup> November 2015.

## How to Avail Testing Facility

The applicant should submit the application in prescribed formats available at the institute's web site <http://cfmtti.dacnet.nic.in>

### CHECK LIST OF DOCUMENTS REQUIRED FOR TESTING OF TRACTOR

Sl. No.	Test	Documents	Title of document	Sets to be submitted	
1.	<b>Initial Commercial and Confidential Test</b>	i)	Application format No.1	Confidential/Commercial (Initial/Batch/Supplementary/variant) Testing of Tractors	Three sets
		ii)	Application format No.2	Details Technical Specifications of tractor (For Initial Commercial/Confidential Test)	Three sets
		iii)	Annexure-I	Coding system letter	Three sets
		iv)	Annexure-II	Running-in schedule	Three sets
		v)	Annexure-III	sketch diagram of complete transmission system	Three sets
		vi)	Annexure-IV	Copy of complete CMVR Certificate, if issued by other Institute	Three sets
2.	<b>Commercial [ Batch and Supplementary ] Test</b>	i)	Application format No.1	Application for Confidential/Commercial (Initial/Batch/Supplementary/variant) Testing of Tractors	Three sets
		ii)	Application format No.3	Details Technical Specifications of tractor (For Batch/Variant/Supplementary Test) from Page 1 to 20 only	Three sets
		iii)	Annexure-I	Coding system letter	Three sets
		iv)	Annexure-II	Running-in schedule	Three sets
		v)	Annexure-III	sketch diagram of complete transmission system	Three sets
		vi)	Annexure-IV	Copy of complete CMVR Certificate, if issued by other Institute	Three sets
3.	<b>Commercial [ Variant] Test</b>	i)	Application format No.1	Application for Confidential/Commercial (Initial/Batch/Supplementary/variant) Testing of Tractors	Three sets
		ii)	Application format No.3	Details Technical Specifications of tractor (For Batch/Variant/Supplementary Test)	Three sets
		iii)	Annexure-I	Coding system letter	Three sets
		iv)	Annexure-II	Running-in schedule	Three sets
		v)	Annexure-III	sketch diagram of complete transmission system	Three sets
		vi)	Annexure-IV	Copy of complete CMVR Certificate, if issued by other Institute	Three sets
4.	<b>Conversion of Conf. to ICT</b>	i)	Application format No.4	Application for Conversion of Nature of test From Confidential to Commercial	Two sets

## FARM SECTION

The Institute possesses 100 ha of farm. Out of which 20.8 ha of land is under irrigation. Regular crops are grown as a part of training and testing program. The farmland is used for the training and demonstration of the agricultural machineries and testing activities of the institute.

To demonstrate the horticulture practices and modern irrigation system, Details of horticultural crops planted in the farm field

Sr. No.	Name of Horticultural Crop	Area in (Ha)	No. of Plants	Revenue (Rs.)	Remark
1.	Sapota No-1	2.81	138	352501.00/-	Fruit crop Auctioned
2.	Sapota No-2	3.65	250	--	Juvenile plants. In vegetative stage.
3.	Jack fruit	1.46	113	23000.00/-	Fruit crop Auctioned
4.	Mango	0.96	86	--	Due to cloudy weather & Fluctuation in atmospheric temperature lemon fruit plants not bear crop.
5.	Lemon	0.67	60	--	Due to cloudy weather & Fluctuation in atmospheric temperature lemon fruit plants not bear crop.
6.	Orange	3.20	414	--	Juvenile plants. In vegetative stage.
Total		12.28	1084	--	

- **Details of crops sown in the farm field in year 2015-16.**

Sr. No.	Season	Crop	Area (Ha.)	Yield (Qt.)	Revenue
1.	<b>KHARIF</b>	Paddy Variety P-B-1	7.44	294.80	Paddy yield auctioned in Rs.1336373/-
		Paddy Variety P-B-1121	15.26	489.50	
2.	<b>RABI</b>	Wheat Variety M.P-1203	18.00	400.00	Yet to be auctioned 10.70 Qt. Gram has been distributed among the staff and earn Rs.36701/- & 12Qt. Yet to be auctioned
		Gram Variety J.G-16	4.00	Approximately 29.00	
3.	<b>ZAID</b>	Green gram Variety P. D. H.-139	4.00	15.00	Crop yet to be harvested
				Approximately	

## ADMINISTRATION

**FINANCE:**

The details of the financial statement Showing allocation, expenditure and Receipt of the Institute during the

**Financial year 2015-16:**

**2401 – NON PLAN**

UNIT: ₹

Sl. No	SUB HEAD	Fund Allotment	EXPENDITURE
1.	01.00.01 Salaries	46500000.00	46315859.00
2.	01.00.02 Wages	7047000.00	7038209.00
3.	01.00.03 OTA	2000.00	2000.00
4.	01.00.06 Medical Treatment	800000.00	798990.00
5.	01.00.11 Traveling Expenses	975000.00	974994.00
6.	01.00.13 Office Expenses	7900000.00	7899862.00
7.	01.00.16 Publication	190000.00	99919.00
8.	01.00.21 Supp. & Mtls.	9900000.00	7875565.00
9.	01.00.26 Advt.& Publicity	1164000.00	1162614.00
10.	01.00.27 Minor Works *	9805000.00	9415738.00
11.	01.00.50 Other charges	2200000.00	2196525.00
<b>TOTAL</b>		<b>86483000.00</b>	<b>83780275.00</b>
<b>Capital :4401 - NON PLAN</b>			
12.	02.00.52 M&E	700000.00	692092.00
13.	02.00.53 Major works *	1800000.00	1800000.00
<b>TOTAL</b>		<b>2500000.00</b>	<b>2492092.00</b>
<b>Capital :4401 PLAN</b>			
14.	14.00.51 Motor Vehicle	1000000.00	994308.00
15.	14.00.53 M&E	0.00	0.00
16.	14.00.52 Major works *	9500000.00	93011775.00
<b>TOTAL</b>		<b>9600000.00</b>	<b>94006083.00</b>

\*Expenditure is based on exp. statement received from CPWD

Final exp. is subjected to reconciliation with PAO, DMI, Nagpur

**REVENUE EARNED DURING THE YEAR 2014-15**

Sl. No.	Item	Amount ( ₹ )
1.	Training	1175965.00
2.	Testing	48791645.00
3.	Farm	3058821.00
4.	Any other	519041.00
<b>TOTAL</b>		<b>53545472.00</b>

**STAFF PROMOTED AND NEWLY RECRUITED****PROMOTION**

Sl. No.	Name & Designation	Post on which promoted/recruited	Date of joining
<b><u>Staff Promoted:</u></b>			
1.	Shri P.C. Meshram, Agricultural Engineer	Senior Agricultural Engineer	25.05.2015
2.	Shri Arun Kumar Sharma, Hindi Translator	Assistant Director (Official Language)	17.06.2015
3.	Shri Pramod Yadav, STA	Agriculture Engineer	16.07.2015
4.	Shri R.P. Pandey, AE (I)	Instrumentation Engineer	30.07.2015
5.	Shri K.L.Kol, Technical Assist.	Senior Technical Assistant	27.10.2015

**RECRUITMENT**

SI No.	Name	Post	Joined
Nil			

**RETIREMENT**

Sl. No.	Name & Designation	Date of retirement
1.	Shri Maruti Jharkhande, MTS (NT)	30.04.2015
2.	Shri Prem Kumar Vishwakarma, Draughtsman Gr. I	31.05.2015
3.	Shri A.C. Kakkar, Administrative Officer	31.07.2015
4.	Shri A.K. Chaudhary, Compounder	30.08.2015
5.	Shri Birbal, MTS (NT)	30.11.2015
6.	Shri Kesav Rao MTS (NT)	29.02.2016

**RESIGNATION**

Sl. No.	Name & Designation	Date of Resignation
1.	Shri Ravi Reddy, Senior Technical Assistant	24.12.2015

**STAFF JOINED THIS INSTITUTE ON TRANSFER**

Sl. No.	Name & Designation	From	Date of Joining
1.	Shri C. K. Tijare, AE	Hisar Institute	27.07.2015
2.	Shri Naresh Dutt, TA	Hisar Institute	27.01.2016

**STAFF TRANSFER FROM THIS INSTITUTE**

Sl. No.	Name & Designation	To	Date of Transfer
1.	Shri A. K. Singh, SAE	Hisar Institute	25.05.2015

**VARIOUS OFFICIAL TRAINING S ATTENDED BY THE STAFF**

Sl. No.	Name and designation of the staff	Name of training	Period	Place of Training
1	Shri Pramod Yadav, STA	Testing or development of agricultural machinery operation of tractors and agricultural implements or machinery	01.06.2015 to 27.06.2015	CIAE, Bhopal
2	Shri K.L. Kol, Technical Assistant	Training on Testing, Operation & Maintenance of Tractors, Agril Machinery & uses of Modern Digital Electronics & analog Instruments	01.10.2015 to 15.10.2015	
3	Shri K.K. Nagle, SIE	Operation , Maintenance of Tractors & Agricultural Implements and Testing of Agricultural Machinery.	02.11.2015 to 28.11.2015	
4	Shri C.V. Chimote, Test Engineer	Operation, Maintenance , Repair, Training & Testing of Tractors , Agricultural Machinery and allied Equipment's.	01.03.2016 to 31.03.2016	
5	Shri A.K. Upadhyay, Agricultural Engineer			
6	Shri V. Haridasan, Stenographer Gr. I	Establishment & Account Matters	29.03.2016 to 07.04.2016	RCVP, Noronha Academy of Administration, Bhopal
7	Shri S. N. Tiwari, Stenographer Gr. I			
8	Shri S. Munshi, UDC			
9	Shri Premalal Dongre, UDC			
10	Shri Suneel Kumar Choudhary, UDC			
11	Shri OM Nardev Arya, LDC			
12	Smt. Madhuri Sharma, LDC			
13	Smt. Manju Agrawal			
14	Shri Shyam Ji Tiwari			

**STAFF WELFARE AND CULTURAL ACTIVITIES**

1. Cultural programmes were organized on the eve of 15<sup>th</sup> August, 2015, the Independence Day celebration.
2. Cultural Programmes, Sports activities, Volley ball and Cricket Tournament between colony Children, Staff, officers & trainees were organized on the eve of 26<sup>th</sup> January 2016, the Republic Day celebration.

**VIGILANCE AWARENESS WEEK**

Vigilance Awareness week observed from 26<sup>th</sup> October, 2015 to 31<sup>st</sup> October 2015 & pledge also taken and suitable banners to this effect were displayed at various locations at the Training, Testing & Administrative Wing.

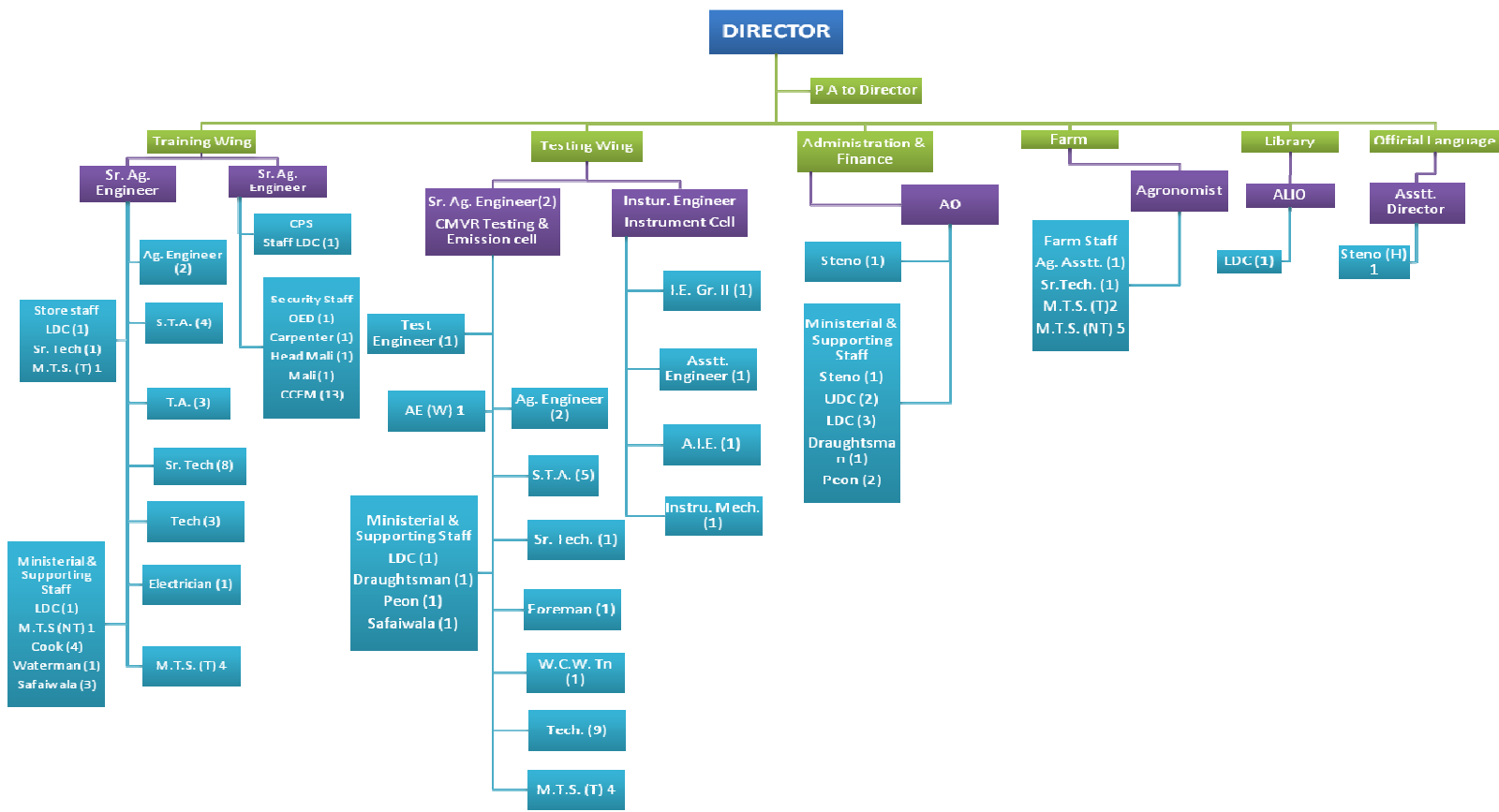
**HINDI DAY CELEBRATION:**

As usual "HINDI PAKHWADA" was celebrated w.e.f. 14.09.2015 to 28.09.2015 and during the period various competitions were organized between officers, staff and trainees of this Institute.

**RTI - APPLICATION RECEIVED DURING THE YEAR:** **35 Nos.**

APPENDIX-I

Deployment Chart : CFMTTI, Budni (M.P) Faculty



**LIST OF TEST REPORTS RELEASED DURING THE YEAR**  
**2015-16**

Sl. No.	Name of the Machine	Type of Test	Test Report No.	Month of release
1	Sonalika International DI - 47 RX 4WD	ICT (incomplet)	T-970/1489/2015	5/15
2	Kubota L4508 DD	Batch	T-972/1491/2015	5/15
3	Eicher 557	ICT	T-973/1492/2015	5/15
4	J.K. Tyre SET - A	Confidential	Comp-42/1493/2015	6/15
5	J.K. Tyre SET - B	Confidential	Comp-43/1494/2015	6/15
6	J.K. Tyre SET - C	Confidential	Comp-44/1495/2015	6/15
7	J.K. Tyre SET - D	Confidential	Comp-45/1496/2015	6/15
8	J.K. Tyre SET - E	Confidential	Comp-46/1497/2015	6/15
9	ACE FORMA DI 450 * Tractor	ICT	T-974/1498/2015	7/15
10	Eicher 548	ICT	T-975/1499/2015	7/15
11	Sonalika international Worldtrac 75 RX 4 wd cabin	ICT	T-976/1500/2015	7/15
12	Preet 955 Challenger	ICT	T-977/1501/2015	7/15
13	Kubota MV 5501 Tractor	ICT	T-978/1502/2015	8/15
14	Powertrac 4455 DS Plus EURO Tactor	ICT	T-979/1503/2015	9/15
15	Force, Balwan 400 S DLX Tractor	ICT	T-980/1504/2015	9/15
16	Sonalika International Worldtrac	ICT	T-981/1505/2015	9/15
17	Escorts Ltd, Farmtrac Champion F2 Tractor	ICT	T-982/1506/2015	9/15
18	Sonalika DI - 750 III RX PP (Incomplete)	ICT (Incomplet)	T-983/1507/2015	9/15
19	ACE DI 305 NG	ICT	T-984/1508/2015	9/15
20	Mahindra YUVO 415 DI	ICT	T-985/1509/2015	10/15
21	Titagarh Super DI - 50	Confidential to Commercial	T-987/1511/2015	11/15
22	Farmtrac 6050	ICT	T-988/1512/2015	11/15
23	Eicher, Eicher 242 USJ Tractor	Variant	T-989/1513/2015	11/15
24	Preet 4549 Challenger	ICT	T-990/1514/2015	11/15
25	International Tractors Sonalika International DI - 35 RXCM Plus	ICT	T-991/1515/2015	11/15
26	Swaraj 744XM FXDCPS 540	ICT	T-992/1516/2015	11/15
27	Farmtrac 6045	ICT	T-993/1517/2015	12/15
28	New Holland, 4510A	ICT	T-994/1518/2015	12/15
29	International Tractors, Sonalika International DI224WD	ICT	T-995/1519/2015	12/15
30	Sonalika International DI 26 Gardentrac	ICT	T-996/1520/2015	12/15
31	Captain 200 DI	Variant	T-997/1521/2015	12/15
32	TAFE , MF 5245 DI Plantary Plux V1	ICT	T-998/1522/2015	12/15
33	VST Shakti MT 180/ JAI - 2 W tractor	Variant	T-999/1523/2015	01/16
34	Titagarh , Titagarh NGT 50 DI Tractor	ICT	T-1000/1524/2015	01/16
35	Eicher - 380	Supplementary	T-1001/1525/2015	01/16
36	Swaraj 960 FE	ICT	T-1002/1526/2015	02/16
37	M/S. SHREE SHYAM AGROTECH , SURAJ 1200 DI TRACTOR	ICT	T-1003/1527/2015	02/16
38	John Deere 5039 D	ICT	T-1004/1528/2015	02/16
39	TAFE, MF 9500 4 WD	ICT	T-1005/1529/2015	02/16
40	Eicher, Eicher 380 USJ`	Variant	T-1006/1530/2015	03/16
41	Force Motors Ltd, OX - 25 Orchard DLX, (Tractor)	Batch	T-1007/1531/2015	03/16
42	Sonalika International DI -30 RX Baagban super 4 WD tractor	ICT	T-1008/1532/2015	03/16
43	Escorts, Powertrac 439 tractor (with optional feature & permanant changes)	Supplimentry	T-1009/1533/2015	03/16
44	Titagarh, Titagarh NGT 45 DI	ICT	T-1010/1534/2015	03/16
45	Force Motors Ltd, Balwan 450 tractor	Batch	T-1011/1535/2015	03/16
46	International Tractor Limited, Sonalika International DI - 20 Gardentrac Tractor	Supplimentry	T-1012/1536/2015	03/16
47	Escorts Limited, Powertrac 434, DS Plus ALT 3500 Tractor	Variant	T-1013/1537/2015	03/16

**CFMTTI BUDNI**

<b>48</b>	Escorts Limited, Powertrac 439 DS Plus ALT 4000 Tractor	Variant	T-1014/1538/2015	03/16
<b>49</b>	Swaraj 824 XM	ICT	T-1016/1540/2015	03/16
<b>50</b>	Mahindra YUVO 265 DI	ICT	T-1017/1541/2015	03/16
<b>51</b>	Escorts Limited, Farmtrac 6050 F1 UM	ICT	T-1018/1542/2015	03/16
<b>52</b>	New Holland 4010 A	ICT	T-1019/1543/2015	03/16
<b>53</b>	New Holland 4710 A	ICT	T-1020/1544/2015	03/16

**LIST OF OECD TEST REPORTS RELEASED DURING YEAR 2015-16**

S.No.	Name of the Machine	Type of Test	Test Report No.	Month of release
54	International Tractors Limited, Sonalika International DI – 750 III RX 4 WD Tractor	OECD	T-971/1490/2015	5/15
55	Solis – 26	OECD	T-986/1510/37/OECD/2015	11/15
56	ITL, Sonalika 30 Tractor	OECD	T-015/1539/38/OECD/2015	03/16

**List of CMVR Certificates issued on Tractors during the year 2015-16**

<b>Sl.No. (1)</b>	<b>Make / Model of machine (2)</b>	<b>CMVR Certificate No. (3)</b>	<b>Date of Certificate (4)</b>
1.	Swaraj 960	CMVR/T- AMD-01/T-789/873/2015-16	01/04/2015
2.	EICHER 485 TRACTOR	CMVR/T- Ext -04/T-790/874/2015-16	07/04/2015
3.	EICHER 5150 ROTARY TRACTOR	CMVR/T- Ext -01/T-791/875/2015-16	10/04/2015
4.	EICHER 380 TRACTOR	CMVR/T- Ext -04/T-792/876/2015-16	10/04/2015
5.	EICHER 333 TRACTOR	CMVR/T- Ext -04/T-793/877/2015-16	10/04/2015
6.	FORCE MOTORS LIMITED, OX25 ORCHARD DLX TRACTOR	CMVR/T- Ext -02/T-794/878/2015-16	10/04/2015
7.	FORCE MOTORS LIMITED, OX25 ORCHARD mini TRACTOR	CMVR/T- Ext -01/T-795/879/2015-16	10/04/2015
8.	EICHER 480 TRACTOR	CMVR/T- Ext -04/T-796/880/2015-16	10/04/2015
9.	EICHER 368 TRACTOR	CMVR/T- Ext -04/T-797/881/2015-16	10/04/2015
10.	EICHER 557 TRACTOR	CMVR/T- Ext -01/T-798/882/2015-16	10/04/2015
11.	EICHER 548 TRACTOR	CMVR/T- Ext -01/T-799/883/2015-16	10/04/2015
12.	EICHER 5660 TRACTOR	CMVR/T- Ext -01/T-800/884/2015-16	10/04/2015
13.	John deere 5060 E PR	CMVR/T-801/885/2015-2016	10/04/2015
14.	EICHER 278 TRACTOR	CMVR/T- Ext -01/T-802/886/2015-16	10/04/2015
15.	EICHER 364 TRACTOR	CMVR/T- Ext -01/T-803/887/2015-16	10/04/2015
16.	Balwan 500 S DLX	CMVR/T- Ext -01/T-804/888/2015-16	15/04/2015
17.	Balwan 400 S DLX	CMVR/T- Ext -01/T-805/889/2015-16	15/04/2015
18.	Balwan 450 S DLX	CMVR/T- Ext -01/T-806/890/2015-16	15/04/2015
19.	Balwan 450	CMVR/T- Ext -01/T-807/891/2015-16	15/04/2015
20.	Balwan 330	CMVR/T- Ext -01/T-808/892/2015-16	15/04/2015
21.	Balwan 400 DLX	CMVR/T- Ext -02/T-809/893/2015-16	17/04/2015
22.	Balwan 500 DLX	CMVR/T- Ext -02/T-810/894/2015-16	17/04/2015
23.	MAHINDRA 6530 4WD	CMVR/T- Ext -01/T-811/895/2015-16	23/04/2015
24.	Mahindra 255 DI power +	CMVR/T- Ext -01/T-812/896/2015-16	27/04/2015
25.	Yanmar EF 454 Tractor	CMVR/T-813/897/2015-16	28/04/2015
26.	TITAGARH SUPER DI 39	CMVR/T-814/898/2015-16	29/04/2015
27.	JOHNDEERE 5075e 4WD V2	CMVR/T-815/899/2015-16	01/05/2015
28.	D. k. CHAMPION TRACTORS	CMVR/T-816/900/2015-16	01/05/2015
29.	Forcetrac 4050 Tractor	CMVR/T-817/901/2015-16	06/05/2015
30.	MF 900 TRACTOR	CMVR/T- Ext -01/T-818/902/2015-16	01/06/2015
31.	Balwan 550	CMVR/T- Ext -01/T-819/903/2015-16	04/06/2015
32.	MF 8775 DI V1 Tractor	CMVR/T-820/904/2015-16	08/06/2015
33.	MF 5245 DI MAHAMAHAN Tractor	CMVR/T- Ext -01/T-821/905/2015-16	08/06/2015
34.	MAHINDRA GUJARAT FARM PLUS 2739 TRACTOR	CMVR/T- 822/906/2015-16	09/06/2015
35.	JOHN DEERE 5060E PR V2 tractor	CMVR/T- 823/907/2015-16	09/06/2015
36.	Swaraj 824 XM Tractor	CMVR/T- 824/908/2015-16	02/07/2015
37.	Field Marshal FM 900 Tractor	CMVR/T- 825/909/2015-16	07/07/2015
38.	Josh 3514 DI Tractor	CMVR/T- 826/910/2015-16	10/07/2015
39.	MF 2630 4WD Tractor	CMVR/T- AMD-01/T-827/911/2015-16	15/07/2015
40.	MF 2630 Tractor	CMVR/T- AMD-01/T-828/912/2015-16	15/07/2015
41.	MF 2635 2wd Tractor	CMVR/T- AMD-01/T-829/913/2015-16	15/07/2015

**CFMTTI BUDNI**

(1)	(2)	(3)	(4)
42.	MF 2635 4wd Tractor	CMVR/T- AMD-01/T-830/914/2015-16	15/07/2015
43.	JOHN DEERE 5050E V3	CMVR/T- AMD-02/T-831/915/2015-16	23/07/2015
44.	JOHN DEERE 5050E V5	CMVR/T- AMD-02/T-832/916/2015-16	23/07/2015
45.	JOHN DEERE 5050E V4	CMVR/T- AMD-02/T-833/917/2015-16	23/07/2015
46.	Eicher 241 Nc (Variant : Eicher 241 xtrac)	CMVR/T- Ext -05/T-834/918/2015-16	24/07/2015
47.	Eicher 242 NC (Variet: Eicher 242 XTRAC & Eicher 242 XTRAC Premium) TRACTOR.	CMVR/T- Ext -05/T-835/919/2015-16	24/07/2015
48.	Eicher 242 NC (Variet: Eicher 242 XTRAC & Eicher 242 XTRAC Premium) TRACTOR.	CMVR/T- Ext -05/T-835/919/2015-16	24/07/2015
49.	Swaraj 960 FE Tractor	CMVR/T- 836/920/2015-16	27/07/2015
50.	R.K.6 Agricultural Trailer	No. CMVR/AT - 13/921/2015-16	30.07.2015
51.	FARM PLUS 2747 TRACTOR	CMVR/T- 837/922/2015-16	07.08.2015
52.	TAFE 30 DI ORCHAD PLUS V1	CMVR/T- 838/923/2015-16	11.08.2015
53.	JOSH 4514 DI TRACTOR	CMVR/T- 839/924/2015-16	12.08.2015
54.	SWARAJ 735 FE TRACTORS.	CMVR/T- Ext-01/T-841/926/2015-16	14.08.2015
55.	JOHN DEERE 5310 V1 tractor	CMVR/T- 842/927/2015-2016	14.08.2015
56.	MF 241 DI 4WD	CMVR/T- 843/928/2015-2016	31.08.2015
57.	MF 5245 DI 4WD	CMVR/T- 844/929/2015-2016	31.08.2015
58.	JOHN DEERE 5060E 4WD TRACTOR	CMVR/T- 845/930/2015-2016	01.09.2015
59.	JOHN DEERE 5050E V1 TRACTOR	CMVR/T- 846/931/2015-2016	09.09.2015
60.	JOHN DEERE 5050D 4WD TRACTOR	CMVR/T- 847/932/2015-2016	09.09.2015
61.	Mahindra 245 DI	CMVR/T- 848/933/2015-2016	11.09.2015
62.	Swaraj 963 Tractor	CMVR/T- 849/934/2015-2016	11.09.2015
63.	Sonalika International DI - 42 RX tractor	CMVR/T- Ext-04/T-850/935/2015-16	30.09.2015
64.	Sonalika International DI - 740 III CM Series tractor	CMVR/T- Ext-04/T-851/936/2015-16	30.09.2015
65.	Sonalika International DI - 740 SM Series tractor	CMVR/T- Ext-01/T-852/937/2015-16	30.09.2015
66.	SWARAJ 744 XMFDCPS540 TRACTORS.	CMVR/T- Ext-01/T-853/938/2015-16	30.09.2015
67.	SWARAJ 735 Fee TRACTORS.	CMVR/T-854/939/2015-16	01.10.2015
68.	OX 25 ORCHARD DLX Tractor	CMVR/T- AMD-01/T-855/940/2015-16	08/10/2015
69.	BALWAN 550 Tractor	CMVR/T- AMD-01/T-856/941/2015-16	08/10/2015
70.	OX 25 ORCHARD MINI Tractor	CMVR/T- AMD-01/T-857/942/2015-16	09/10/2015
71.	BALWAN 500 DLX TRACTOR	CMVR/T- AMD-01/T-858/943/2015-16	09/10/2015
72.	BALWAN 330 Tractor	CMVR/T- AMD-01/T-859/944/2015-16	09/10/2015
73.	BALWAN 500 S-DLX Tractor	CMVR/T- AMD-01/T-860/945/2015-16	09/10/2015
74.	JOHN DEERE 5075E PR TRACTOR	CMVR/T- 861/946/2015-16	14.10.2015
75.	JOHN DEERE 5065E PR TRACTOR	CMVR/T- 862/947/2015-16	14.10.2015
76.	FARM PLUS 35TRACTOR	CMVR/T- 863/948/2015-16	10.11.2015
77.	ACE FORMA DI 450 ☆ TRACTOR	CMVR/T- Ext-01/T-864/949/2015-16	19.11.2015
78.	ACE DI 550 + TRACTOR	CMVR/T- Ext-02/T-865/950/2015-16	19.11.2015
79.	ACE DI 854 NG TRACTOR	CMVR/T- Ext-01/T-866/951/2015-16	19.11.2015
80.	ACE DI 6565 TRACTOR	CMVR/T- Ext-01/T-867/952/2015-16	19.11.2015
81.	ACE DI 305 NG TRACTOR	CMVR/T- Ext-01/T-868/953/2015-16	19.11.2015
82.	ACE DI 350 NG TRACTOR	CMVR/T- Ext-01/T-869/954/2015-16	19.11.2015
83.	ACE DI 450 + TRACTOR	CMVR/T- Ext-02/T-870/955/2015-16	19.11.2015
84.	VT180DHS/JAI-4W TRACTOR	CMVR/T- 871/956/2015-16	19.11.2015
85.	ACE DI 550 ☆ TRACTOR	CMVR/T- Ext-01/T-872/957/2015-16	20.11.2015

**CFMTTI BUDNI**

<b>(1)</b>	<b>(2)</b>	<b>(3)</b>	<b>(4)</b>
86.	ACE DI 450 NG TRACTOR	CMVR/T- Ext-01/T-873/958/2015-16	20.11.2015
87.	ACE DI 550 NG TRACTOR	CMVR/T- Ext-01/T-874/959/2015-16	20.11.2015
88.	Sonalika International DI – 730 II FE tractor	CMVR/T- Ext-01/T-875/960/2015-16	20.11.2015
89.	Preet 9049 Agritrac 4WD Tractor	CMVR/T- 876/961/2015-2016	08.12.2015
90.	Swaraj 834 XM PXPDS540 Tractor	CMVR/T- Ext-01/T-877/962/2015-16	17/12/2015
91.	Swaraj 724 XM ORCHARD Tractor	CMVR/T- Ext-02/T-878/963/2015-16	17/12/2015
92.	Swaraj 724 XM ORCHARD Narrow Track Tractor	CMVR/T- Ext-01/T-879/964/2015-16	17/12/2015
93.	SWARAJ 744 XM Tractor	CMVR/T- Ext-01/T-880/965/2015-16	17/12/2015
94.	SWARAJ 724 XM Tractor	CMVR/T- Ext-04/T-881/966/2015-16	17/12/2015
95.	Swaraj 825 XM Tractor	CMVR/T- Ext-02/T-882/967/2015-16	17/12/2015
96.	Swaraj 744 FE Tractor	CMVR/T- Ext-04/T-883/968/2015-16	18/12/2015
97.	JOHN DEERE 5310 PR TRACTOR	CMVR/T- 884/969/2015-16	31/12/2015
98.	JOHN DEERE 5060E V8 TRACTOR	CMVR/T- 885/970/2015-16	31/12/2015
99.	NBHT,M/s New Bihar Seller Udyog, Agricultural Trailer	CMVR/AT-14/971/2015-16	04.01.2016
100.	SWARAJ 735 FE JXPDS540	CMVR/T- Ext-01/T-886/972/2015-16	08.01.2016
101.	SWARAJ 735 XT	CMVR/T- Ext-01/T-887/973/2015-16	08.01.2016
102.	SWARAJ 855 XM GXDCRPS540D	CMVR/T- Ext-01/T-888/974/2015-16	08.01.2016
103.	SWARAJ 855 XM TRACTOR.	CMVR/T- Ext-01/T-889/975/2015-16	08.01.2016
104.	VST MITSUBISHI SHAKTI/VT180DI/JAI-2WB	CMVR/T- Ext-01/T-890/976/2015-16	25/01/2016
105.	VST MITSUBISHI SHAKTI/VT180DI/JAI-2W	CMVR/T- Ext-01/T-891/977/2015-16	25/01/2016
106.	SWARAJ 855 FE TRACTOR	CMVR/T- Ext-04/T-892/978/2015-16	29/01/2016
107.	John Deere 5075E PR V2	CMVR/T- -893/979/2015-16	29/01/2016
108.	VSTMITSUBISHI SHAKTI/ VT 224-ID	CMVR/T- Ext-01/T-894/980/2015-16	01/02/2016
109.	VSTMITSUBISHI SHAKTI /VT 224-ID/AJAI-4WB	CMVR/T- Ext-01/T-895/981/2015-16	01/02/2016
110.	TAFE MF 311 DI tractor	CMVR/T-896/982/2015-2016	09/02/2016
111.	John Deere 5060 E V7	CMVR/T- 897/983/2015-2016	29/02/2016
112.	M/s Tractors and Farms Equipment Limited, MF 9500 4 WD Tractor	CMVR/T- Ext-01/T-898/984/2015-16	04/03/2016
113.	M/s Tractors and Farms Equipment Limited, MF 1134 Tractor	CMVR/T- Ext-01/T-899/985/2015-16	04/03/2016
114.	M/s Tractors and Farms Equipment Limited, MF 5245DI PLANETARY PLUS V1 Tracto	CMVR/T- Ext-01/T-900/986/2015-16	04/03/2016
115.	PREET 6549 Agritrac 4 WD Tractor	CMVR/T- -901/987/2015-16	08/03/2016
116.	Mahindra Gujrat Tractor Limited , Farm Plus 45	CMVR/T- -902/988/2015-16	08/03/2016
117.	MF 9500 2WD Tracto	CMVR/T- -903/989/2015-16	08/03/2016
118.	MF 5245 DI 4 WD Tractor	CMVR/T- 904/990/2015-16	08/03/2016
119.	MF 241 DI 4 WD Tractor	CMVR/T--905/991/2015-16	08/03/2016
120.	MF 8775 DI V1Tractor	CMVR/T--906/992/2015-16	08/03/2016
121.	Mf 1035 DI V2 Tractor	CMVR/T- 907/993/2015-16	08/03/2016
122.	EICHER 380 USJ	CMVR/T- 908/994/2015-2016	10/03/2016
123.	EICHER 242 USJ	CMVR/T- 909/995/2015-2016	10/03/2016
124.	JOHN DEERE 5065E 4WD V2	CMVR/T- 910/996/2015-2016	15/03/2016